

Building and Construction

Greenfield Stud & Track

The Greenfield is a complete roll forming system which produces 97% of all the stud and track sizes commonly used today. Whether you're starting out, or looking to increase production, The Greenfield, like all Samco roll formers, is engineered for high volume and high quality.



PurlinMaster

The Purlin Master offers a wide range of sizes and capabilities. With quick changeovers for web widths & flange height to quick changeovers for 'C', 'U', 'Z', Sigma profiles. This system incorporates versatility and ruggedness for Purlin production.



Ironclad

From regular, rafting or Double-Hi mills Samco's Ironclad systems provide a multitude of options with unsurpassed performance. Pre-cut, post-cut, painted stock, coated stock, high speed or standard production rates your options are virtually endless. Our entry systems include coil cars, single-ended uncoliers and bi or tridimensional coil cars.



Purlin lines

- Quick change web width changeovers
- Quick change flange height changeovers
- Thru shaft design
- Gear box at each pass
- Line speed: 200-400 fpm
- PurlinMaster
- Workhorse Purlin Line

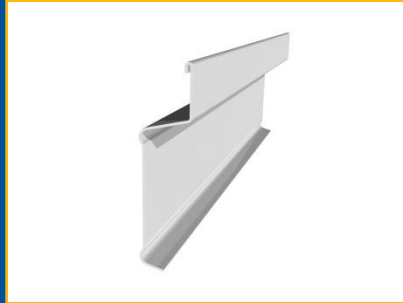
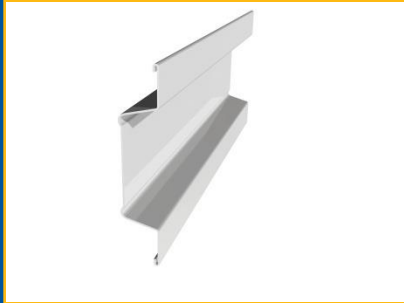
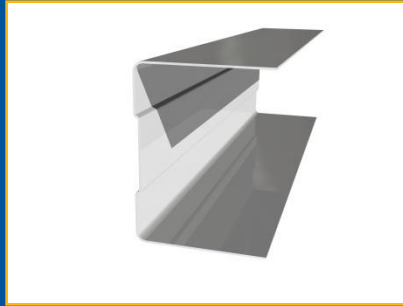
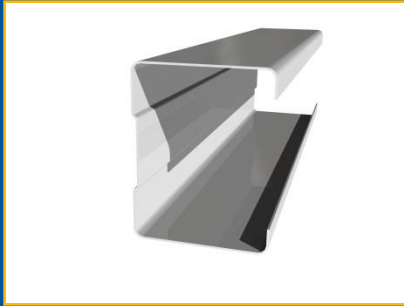
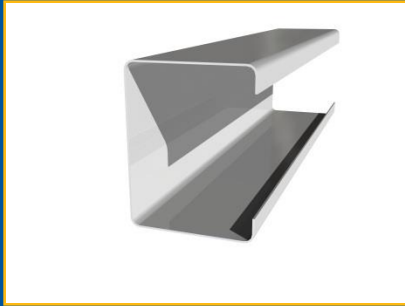
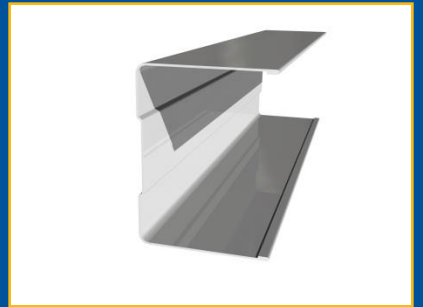
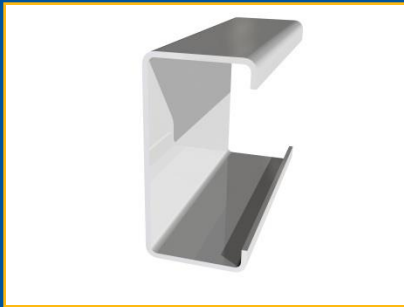


Purlin Features

- 10 –16 GA
- Galvanized, Painted, Hot rolled black steel
- Up to 55 KSI
- Purlin Sizes
 - Webs:16” to 4” (A)
 - Legs heighths: 4” to 2” (B/D)
 - Lips1/2” up to 1” (C)
- Multiples Profiles



Purlin Profiles



Multizone Thru-Shaft



Samco Purlin Rollforming Lines

High Performance Series with flexibility to meet all production needs

Conventional Series

- Manual changes
- Purlin C lines,
- Post-cut,
- Up to 50m/min



Professional Series)

- Quick Change via Duplex Mill (Web-Leg H.)
- Purlins C and Z (semi automatic adjustment)
- Pre-punch & pre-cut,
- Up to 75 m/min
- **WorkHorse (WH) PurlinMaster**
- **Enterprise Connectivity as option**



Premium Series

- Fully Automated,
- Quick Change via Double Duplex Mill,
- Purlins C , Z, Sigma, Eave (fully automatic adjustment)
- Pre-punch & pre-cut
- Up to 75 m/min
- **PurlinMaster**
- **Enterprise Connectivity as standard**

